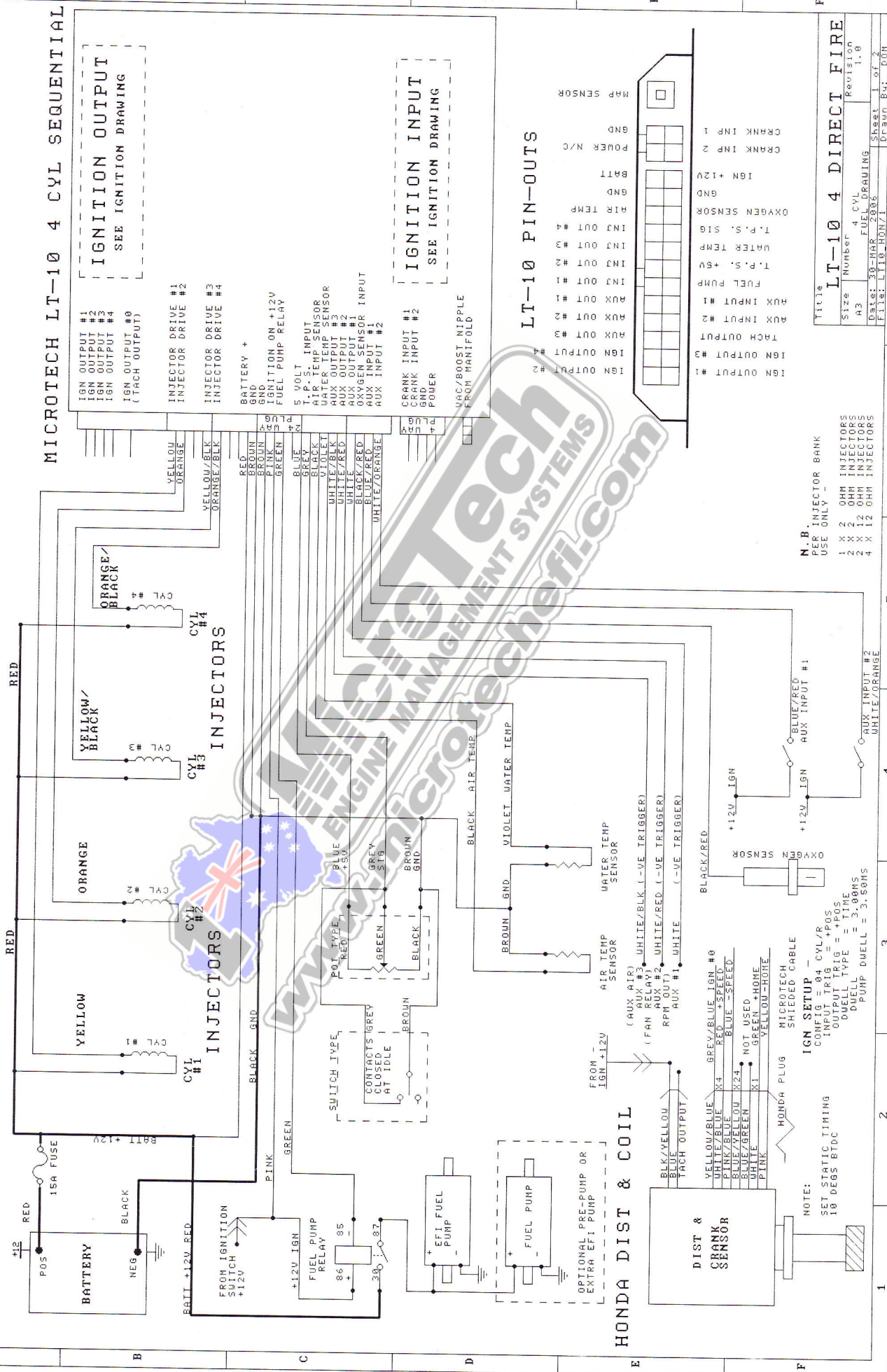


# MICROTECH LT-10 4CYL SEQUENTIAL ENGINE MANAGEMENT SYSTEM



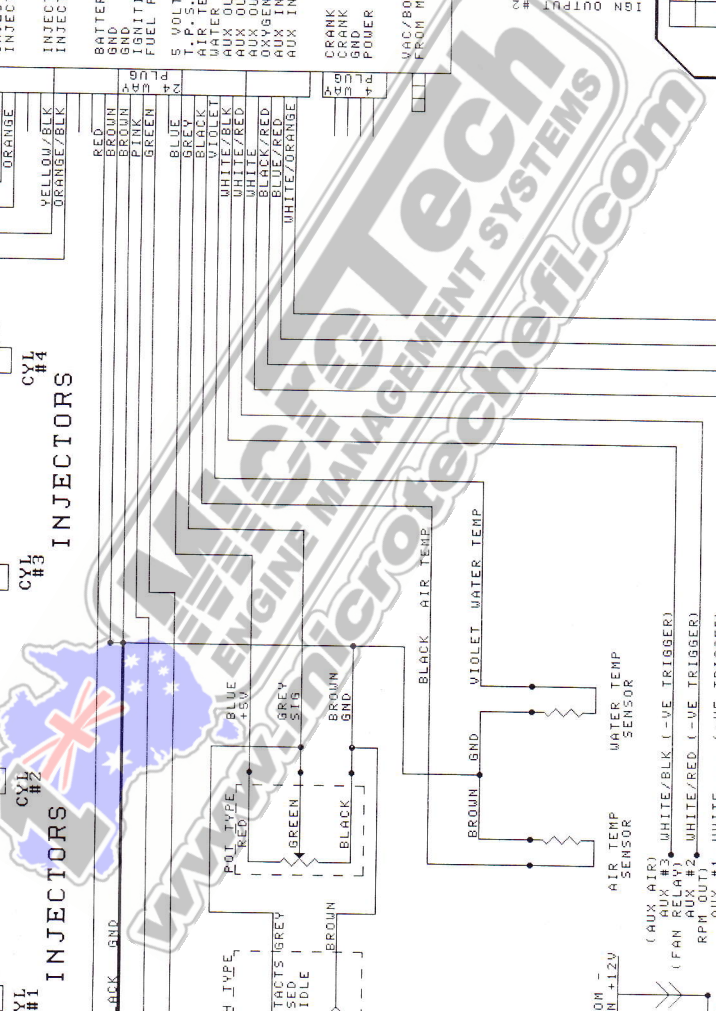
LT-10 4 DIRECT FIRE

Size	Number	Revision
A3	4	1.0

DATE: 30-MAR-2002  
FILE: LT10\_HONZ1  
Sheet 1 of 2  
Drawn By: DOM

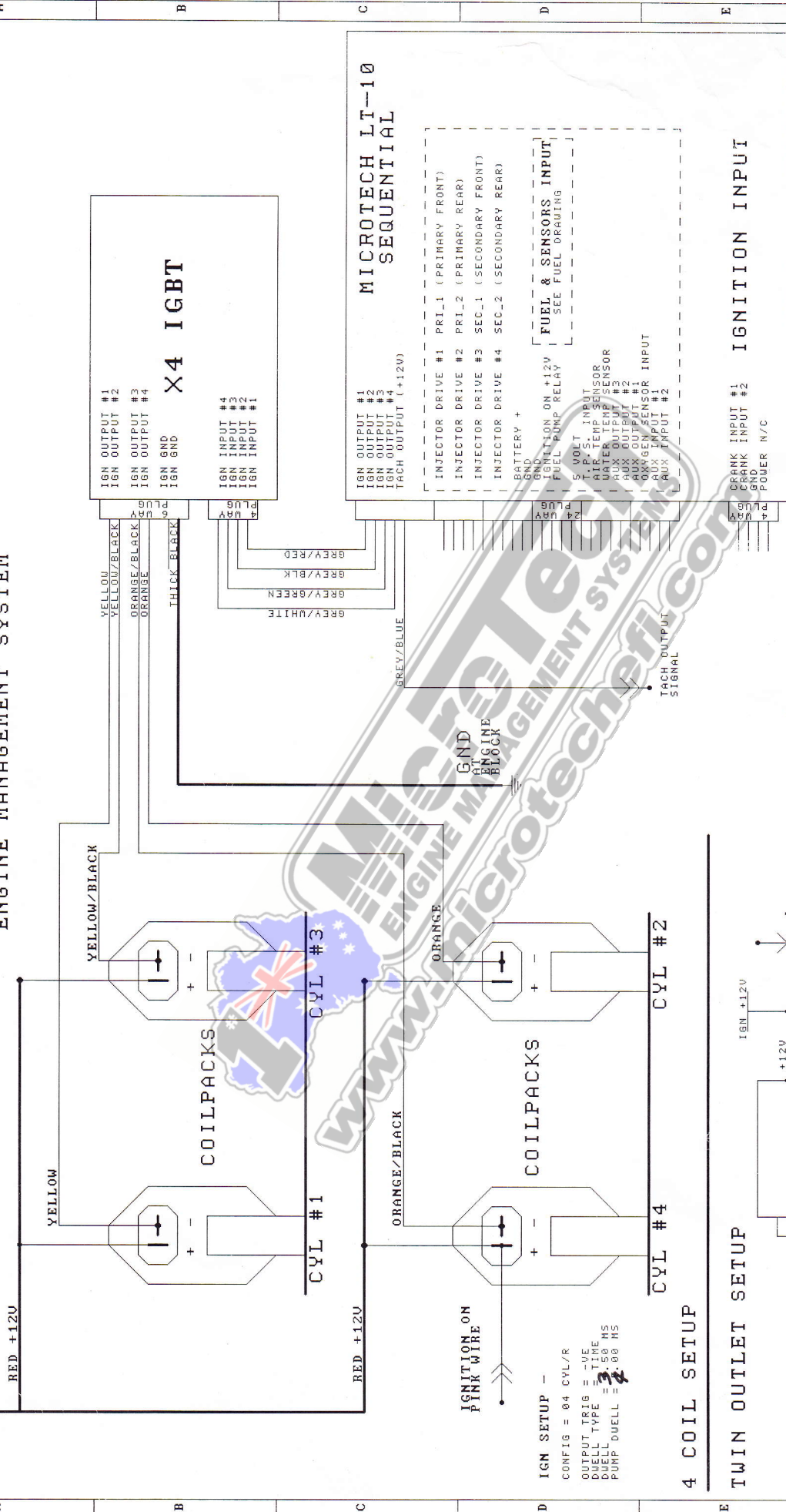
LT-10 PIN-OUTS

IGN OUTPUT #1	IGN OUTPUT #2	IGN OUTPUT #3	IGN OUTPUT #4	AIR TEMP	WATER TEMP	T.P.S. +5V	T.P.S. SIG	FUEL PUMP	AUX INPUT #1	AUX INPUT #2	AUX INPUT #3	AUX INPUT #4	POWER N/C	BATT	GND	CRANK INF 1	CRANK INF 2
---------------	---------------	---------------	---------------	----------	------------	------------	------------	-----------	--------------	--------------	--------------	--------------	-----------	------	-----	-------------	-------------



# MICROTECH LT-10+IGBT 4 CYL SEQUENTIAL ENGINE MANAGEMENT SYSTEM

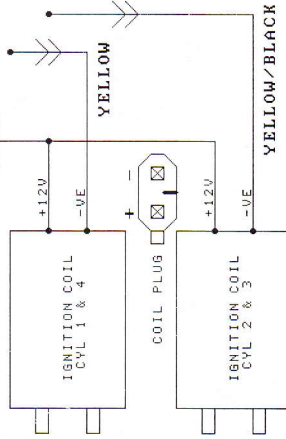
IGNITION +12V  
RED +12V



**IGN SETUP** -  
 CONFIG = 04 CYL/R  
 OUTPUT TRIG = -VE  
 DWELL TYPE = TIME  
 DWELL = 1.00 MS  
 PUMP DWELL = 1.00 MS

## 4 COIL SETUP

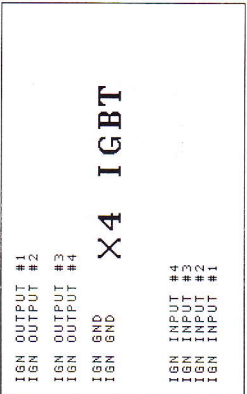
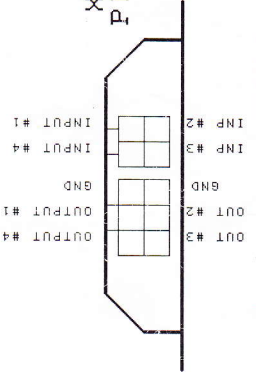
## TWIN OUTLET SETUP



**IGN SETUP** -  
 CONFIG = 04 CYL/R  
 OUTPUT TRIG = TWIN  
 DWELL TYPE = TIME  
 DWELL = 1.00 MS  
 PUMP DWELL = 1.00 MS

NOTE - SOFTWARE MAY  
 NEED UPGRADE  
 FOR TWIN COILS

## X4 IGBT PIN OUTS



Title		LT-10 X4 DIRECT FIRE	
Size	Number	4	CYL X4 IGBT
Revision	1.0		
A3	IGNITION DRAWING		
Date:	4-OCT-2004	Sheet	2 of 2
File:	LT10-472	Drawn By:	DDM